

House Building Reimagined...



FastHouse

DESIGN ▸ MANUFACTURE ▸ INSTALL

OFFSITE TIMBER FRAME SYSTEMS

www.fast-house.co.uk

ABOUT US

FastHouse has developed a Specialised Construction System in a Factory Controlled Environment, which prides itself in its High Performing, Energy Efficient and Cost Effective methods.

Why?

Traditional methods of construction have failed to evolve over the last number of decades.

FastHouse is here to provide the solution to the housing shortage by offering Innovative Manufacturing Solutions to:

- Address the shortage of skilled construction;
- Reduce construction time frame;
- Provide certainty to programme;
- Remove the risk of failures – design, materials and workmanship failures.

Our off-site modern methods of construction result in improved build quality in a factory environment, resulting in substantially shorter on-site construction times.

What?

FastHouse has developed a range of products to satisfy market demand across the following construction sectors:

- Private Residential Developments
- Social and Affordable Housing
- Private Rented Sector
- Commercial Buildings
- Schools

Key benefits of using FastHouse products

-  Reduced build time on site
-  Reduced material waste and site storage requirement
-  Reduced site labour and material costs
-  Certainty on build program
-  Less dependency on weather
-  Less reliability on trades
-  Factory controlled construction
-  Traceability
-  One point contact
-  Minimise health and safety risks



THE PROCESS

FastHouse products are manufactured in a 200,000 ft² state of the art, multi-million pound production facility in Limavady, Northern Ireland.

OFFSITE (IN FACTORY)

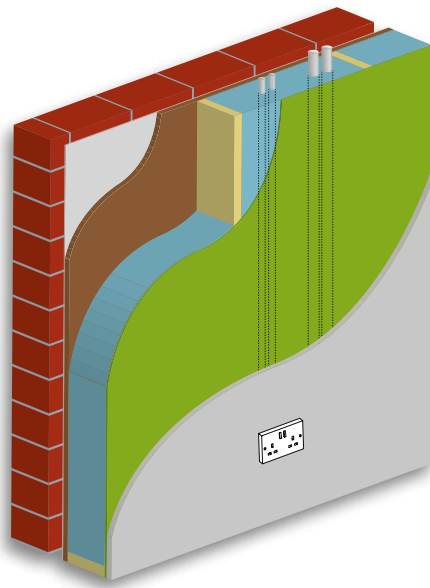
- Wall panels are designed and manufactured using innovative technology, producing a high quality finished product every time.
- Automated machinery ensures timber lengths are cut accurately, resulting in reduced waste, with less costs being transferred to the client.
- Factory fitted insulation ensures thermal and acoustic regulation.
- Factory finished internal walls, with various internal boarding options, as per the client's specification.
- Wall panels are nailed on an automated nailing line, delivering consistent high quality finished product.
- Closed panels fitted with electrical conduit and wall surfaces routed out to give access to services, as per the client's specification.
- Optional factory fitted windows will speed up overall build time on site.
- Product wrapped with protective covering and placed on stillage for delivery by lorry to site.

ON SITE

- Upon arrival to site, product is craned off the stillage, lifted and locked into place with mechanical jointing brackets.
- Wall panels are fixed to a concrete base with pre-galvanised mild steel.
- Roof trusses installed – felt and lath optional.
- Building is weather tight within 2 days of delivery.



WALL PANELS

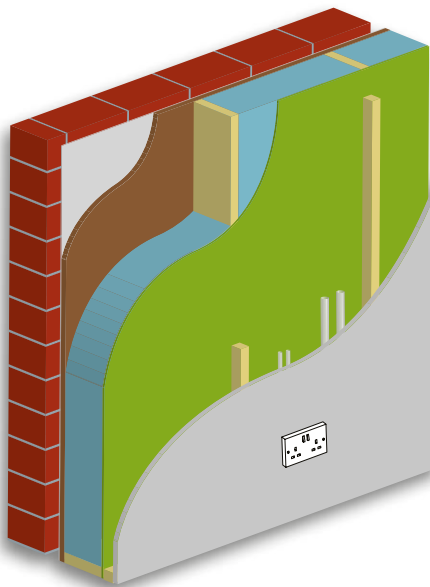


CLOSED PANEL TIMBER FRAME

-  External Breathable Membrane
-  9mm OSB3 Sheetting
-  140mm x 38mm Imported CLS C16 Treated Timber (Available at 400 or 600 c/c)
-  Factory Fitted Insulation (Specification to meet both Thermal and Acoustic Regulations)
-  Vapour Control Layer*
-  Internal boarding (Specification to meet current building control regulations)




Closed panel walls are factory fitted with electrical conduit and electrical boxes

Optional factory fitted windows



CLOSED PANEL TIMBER FRAME

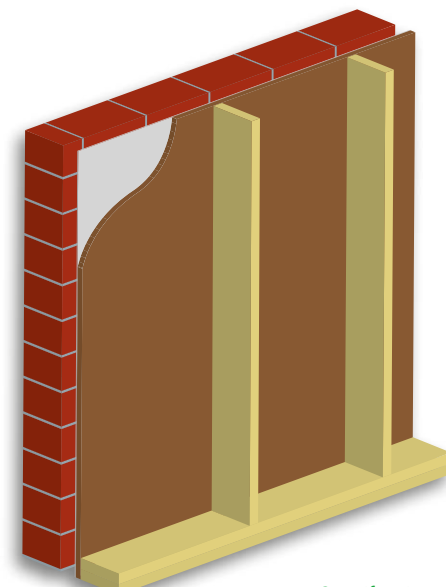
(Complete with factory fitted service cavity)

-  External Breathable Membrane
-  9mm OSB3 Sheetting
-  140mm x 38mm Imported CLS C16 Treated Timber (Available at 400 or 600 c/c)
-  Factory Fitted Insulation (Specification to meet both Thermal and Acoustic Regulations)
-  Vapour Control Layer* (Optional lining board can be specified)
-  Internal boarding (Specification to meet current building control regulations)




Closed panel walls are factory fitted with electrical conduit and electrical boxes

Service cavity includes plumbing ducts

Optional factory fitted windows



OPEN PANEL TIMBER FRAME

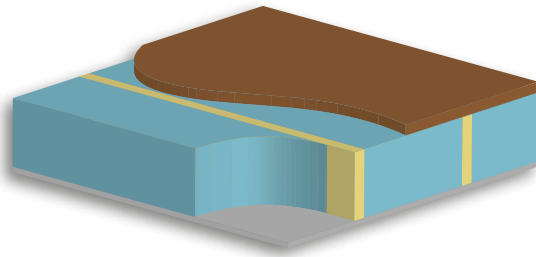
-  External Breathable Membrane
-  9mm OSB2 sheetting
-  140mm x 38mm Imported CLS C16 Treated Timber

With open panel walls services, insulation and internal boarding are fitted on site by contractor.

Specification of each element within the wall panels can be adjusted to client requirements.

* At all external vertical wall connections FastHouse use an air seal compound to ensure continuity of the Vapour Control Layer.

FLOOR PANELS



FLOORING CASSETTE

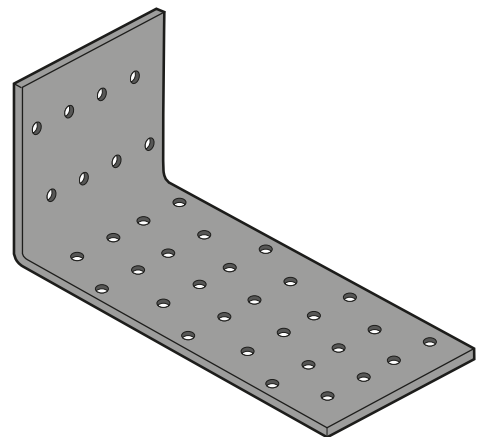
- 22mm flooring board
- 220mm x 44mm Imported C16 Timber
- Insulation (Specification to meet both Thermal and Acoustic Regulations)
- Ceiling finished with 12.5mm board (minimum density 10Kg per m²)

Specification of each element within the floor panels can be adjusted to client requirements.

WALL BASE CONNECTION DETAIL

Timber wall structures are connected to both timber and concrete support using two types of pre-galvanised mild steel connectors.

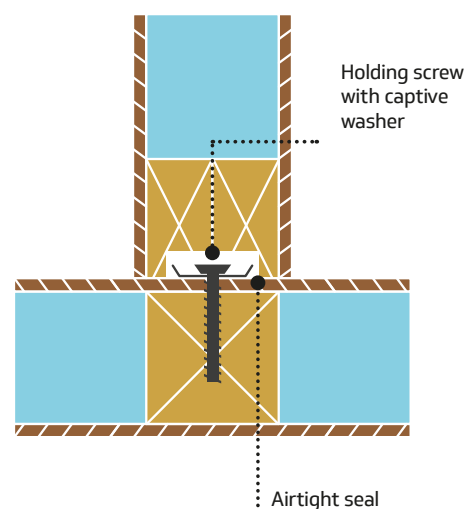
The timber frame levelling system provides the combined function of levelling and fixing the sole plate to the foundation. Non-shrinkage grout is applied to the base of all walls to minimise movement.

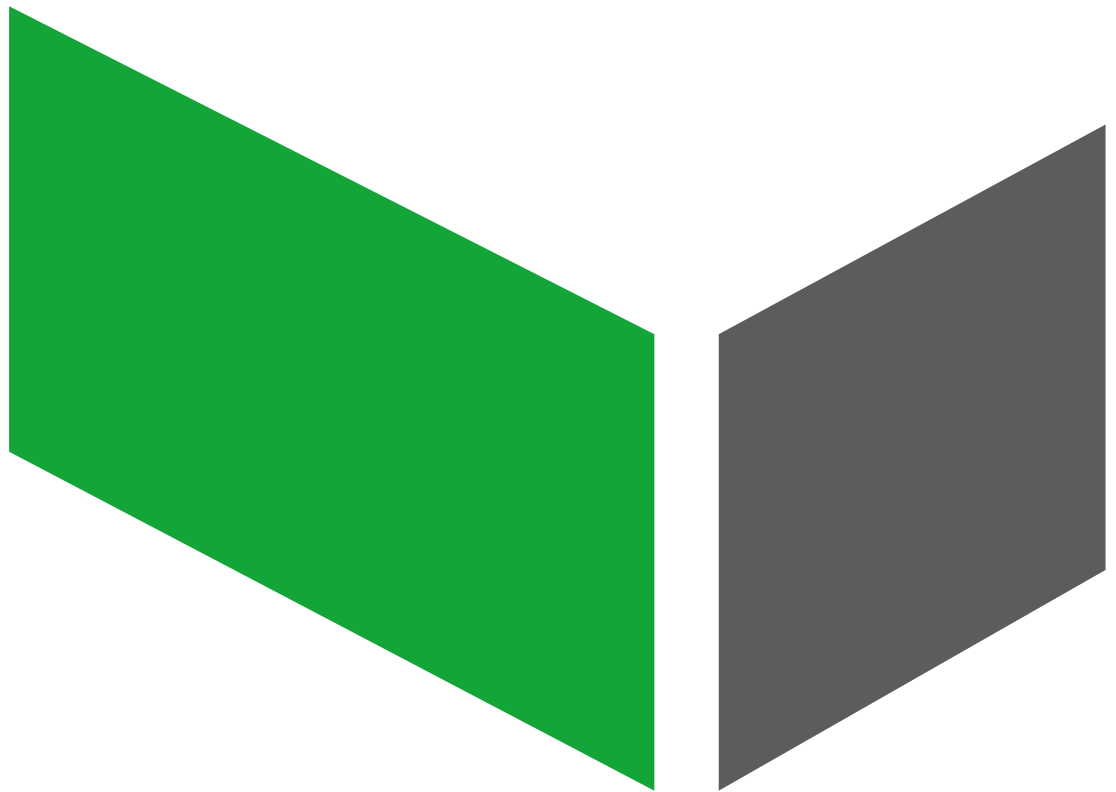


MECHANICAL FIXING BRACKETS

A mechanical fixing bracket is used for connecting one wall to another, while creating an air tight seal. The clip lock is made from stainless steel – this locks the connection with a slide-in fixing. The base bracket catches the holding screw and lines the connection into the exact position. The fixing bracket is made from premium quality steel.

External & Internal wall





www.fast-house.co.uk

FastHouse

99 Dowland Road
Limavady BT49 0HR
Northern Ireland

Telephone: +44 (0)28 7744 6363
Email: sales@fast-house.co.uk

